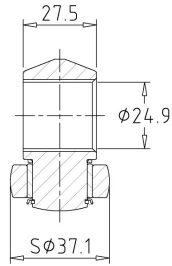
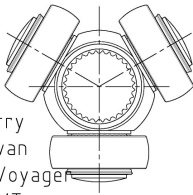


**CH-6005GI**

GKN

- 96-00 CHRYSLER  
Town & Country
- 96-00 DODGE Caravan
- 96-00 PLYMOUTH Voyager
- 1996- INFINITI G20 MT

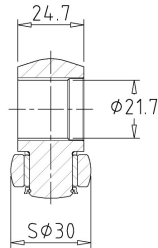
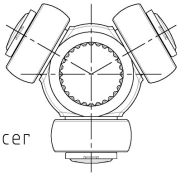


Gaps  
32

**CH-6006GI**

GKN

- 91-98 FORD Escort  
Tempo
- MERCURY Tracer  
Topaz
- 84-86 Dodge/Plymouth/Chrysler
- 95-97 Dodge/Plymouth Neon

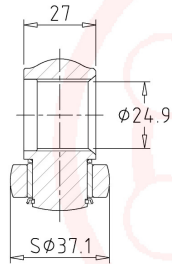
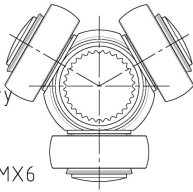


Gaps  
28

**CH-6007GI**

GKN

- 92-96 TOYOTA Camry
- 93-97 FORD Probe  
2.0/2.5 AT
- 93-97 MAZDA 626/MX6  
2.0/2.5 AT
- 91-95 CHRYSLER
- 95-99 FORD Windstar



Gaps  
32

